



# The Westerner

April 1964

## HOBBIES



JAYNE-HEATHER

If you happened to have been in one of several Los Angeles entertainment spots recently you may have seen and heard a female vocalist named Jayne-Heather. You probably heard her sing folk songs in American, Spanish, Hebrew, Hindustani, Indian, Welsh, French, German, Afrikaans, English and Scottish. You may also have recognized her as the secretary in the Western Region's Financial Planning and Analysis section - Heather de Lacy-Cheyne.

Heather was born in London of Scottish parents and is a "Scot thru 'n thru", being a direct descendant of Bonnie Prince Charlie. As a result, many of the folk songs Jayne-Heather sings are Scottish Jacobite Rebellion songs.

Heather has travelled all over the world since she was 4 and, being a natural-born singer, has learned many of the songs in the countries she visited.

In London she began singing as a hobby in clubs throughout the city, where she sang for 2 years, accompanying herself on the guitar, which she plays "by ear".

Heather has the distinction of having had her hobby turn her toward the ranks of professionals and is now in the process of recording her first L.P. album. Among the selections on the album will be 4 of her own compositions. We wish Jayne-Heather the best of luck and much success in this new venture.

## Manager's Profile



The profile for April is that of Neil E. Kennedy, manager of Fabrication and Assembly Industries.

Neil's position gives him accountability for market support functions in such areas as electronics and construction. His mission is to provide assistance to the branch offices in situations where special talents are required. Along with the responsibility for customer education and advanced sales training, Neil handles Special Industry Sales programs and demonstrations through personnel located throughout the Western Region.

Neil began working with IBM in 1956 and became manager of Manufacturing Industries in July of 1963. Manufacturing was later divided into three industries --- Fabrication and Assembly, Aerospace, and Process.

A BA degree in Economics from Pomona College led to an MBA degree from UCLA for Neil, who is always "on-the-go". This "on-the-go" spirit makes him an avid pro-football fan. He relaxes on a pair of skis and steep slopes.

Rolling Hills Estates is the home of the Kennedy family. Neil and his wife, Helen, have two children --- 3 1/2 year old Lisa and 5 month old Steven.

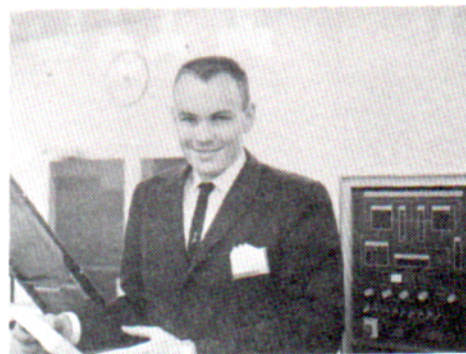
# NEW EMPLOYEES



Dorothy Jones

Dorothy Jones has joined IBM as a secretary to Glenn A. Black and typist for Technical Publications. She attended John Marshall High School, received her B.A. in political science from UCLA, and did graduate work in elementary education at San Fernando Valley State.

Dorothy enjoys oil painting, other art work, swimming, badminton, and travelling.



Allyn Stott

Allyn Stott has joined the LA Datacenter as a computer operator trainee. He has attended the University of Illinois and recently moved to Los Angeles from Western Springs, Illinois.

His leisure time is spent on water sports, and aviation, and he lists sciences and mathematics among his interests.



Cassie Higgins

Cassielean I. Higgins is the new keypunch operator in DP Operations. She is a native Angeleno and is presently attending L.A. State working for her degree in accounting. Prior to joining IBM, she was employed by Hughes in Culver City.

Cassielean and her husband, who is employed by the Los Angeles City Schools, enjoy tennis, miniature golf, bowling and music. They have two children, both girls.

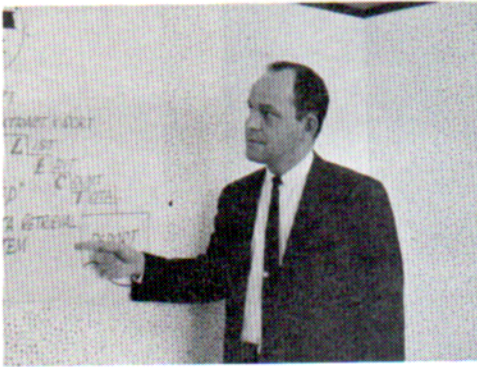


Marilyn Winslow

Marilyn Winslow, Product Marketing, attended Lewis and Clark College in Portland, Oregon, where she earned her B.A. in music in 1958. Before coming to IBM, she was employed by the Humetrics Division of Thiokol.

She is presently attending UCLA majoring in business. With what free time she has from studies she enjoys seeing her friends. After her graduation from college, Marilyn spent seven months touring Europe and visiting friends and hopes to return in the future.

# Supervisor's Sketch



Jim Baszczowski, Supervisor of D P Services

The most recent addition to the ranks of supervisors is Jim Baszczowski, newly appointed supervisor of the methods group of DP Services.

Jim and his staff of five programmers and a secretary are responsible for the installation and maintenance of all national 1401 and 1410 programs used by DP Operations in the Western Region. They also write and maintain all local programs for the department.

Jim, originally from Trenton, New Jersey, where he attended Rider Business College, was employed by a New Jersey steel company as a 650 programmer prior to moving to Los Angeles in August of 1958.

He joined IBM in November, 1958, as a machine operator in what was then Machine Accounting and in June, 1959, became a member of the methods group of Financial Planning. DP Services claimed his talents in June, 1963, and his appointment to his present position was made in February of this year.

The Los Feliz area of Los Angeles is home to Jim and in his off-duty hours he is a hi-fi enthusiast and enjoys bowling.

Good luck to Jim in his new position.

# Suggestion Awards

Adding to his already impressive record of suggestion awards is Chuck Myers, supervisor in Administrative Services, who received not one, but three awards during the past month. This brings his total number of awards won to date to thirteen.

The three new suggestions, which earned \$25.00 each for Chuck, were all submitted while he was working in Product Scheduling prior to his promotion to supervisor last year.

One suggestion was for a procedural change for submitting cable specifications, another for installing stairway direction signs in the WRO building, and the last to reduce the product schedule for specific DP equipment.

Chuck still has several suggestions pending and, judging from past performance, we will be hearing of more awards to him. We certainly hope so.



Bill Stopper presents award to Elaine Regienus

Elaine Regienus, controller-coordinator for Glendale AOO, was recently presented a \$40 suggestion award by Administration Manager Bill Stopper. She suggested installation of pedestrian safety controls for the driveway and parking areas of Glendale AOO 843.

In August of 1963, Elaine transferred to California from a Hartford, Connecticut branch office, where she worked as a card designer. She graduated from Becker Junior College in Worcester, Massachusetts, with retail merchandising as her major.

Elaine enjoys the outdoors, especially camping. In fact, while transferring to California, she "camped" across the country.

## MEETING HILITES

The March IBM Club meeting was held on March 10. Activities for this year were the main order of business.

President Bill Beattie announced that the film "Mad, Mad, Mad World" will be shown for the Regional Office on April 11, 10:30 A.M., at the Cinerama Theatre on Sunset Blvd.

The committee in charge of the Christmas dinner dance announced they have reserved Gene Autry's Continental Hotel for Saturday, December 5. An amendment to the constitution was adopted to allow the current administration to choose a date and place for the subsequent year's Christmas dinner dance.

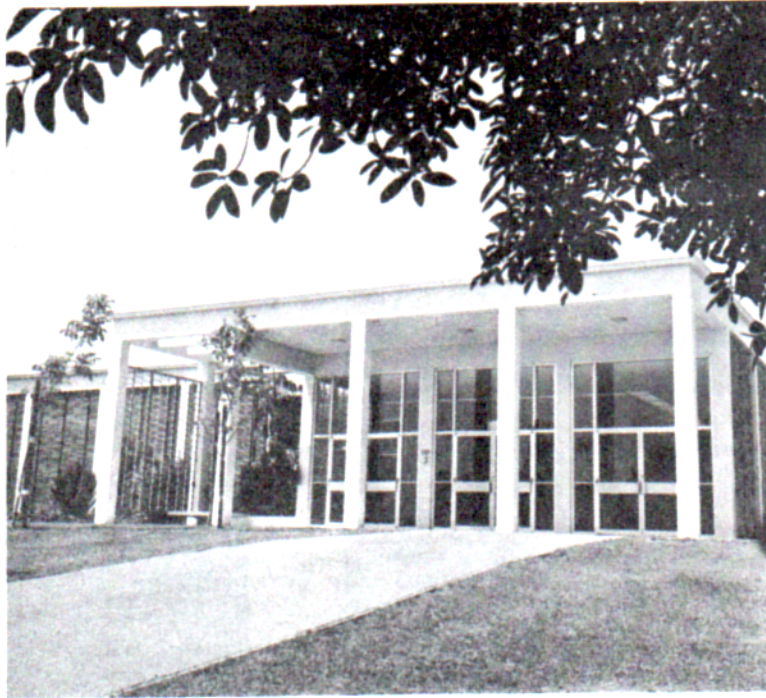
A committee was chosen to make preparations for the family picnic and it was decided to reserve Knott's Berry Farm for the Children's Christmas party on December 12, 1964.



### HAVE A FAIR TRIP?

Anyone interested in discount flights or package vacations to the World's Fair, Hawaii, Europe, the Orient, Alaska, etc., may contact Donna Barnard, Ext. 1258, for information.

# SPOTLIGHT ON WDPC



Western Data Processing Center, University of California, Los Angeles. Founded in 1957 by the Regents of the University of California in cooperation with IBM

A man walks through the glass doors into Western Data Processing Center. He looks through the huge glass window into the computer room. He turns on the well worn record that has been prepared for the thousands of visitors, who - like him - want to understand the role of WDPC in computing, research, and education. The man might be any man; the scene is a daily one.

WDPC is located on the UCLA Campus in an annex to the Graduate School of Business Administration. Its computing facilities are significant: an IBM 7094 computer directly coupled to an IBM 7040 computer. The relationship is that of master and slave. The IBM 7040 handles the input, output, and scheduling for the IBM 7094; the IBM 7094 does the computing dictated to it by the smaller computer.

UCLA, or any other school in the Western Region, may use these computing facilities without charge. The use must be related to research or computer instruction. A few examples of the many current research projects are earthquake research, computer design, and rock analysis.

Originally, schools other than UCLA mailed in their programs and data, in the form of IBM cards. The data was processed, and the printed output was mailed back to the schools.

Today, "turn-around time" - the complete process of input, processing, and output - has been reduced to less than 24 hours for many of the schools. A Tele-processing network has made possible this impressive reduction in time. The eleven schools on this network are: Air Force Academy, Caltech, University of California - San Diego, Claremont, USC, Stanford, Orange State, Oregon State, University of Oregon, San Fernando Valley State, and the University of Utah. A school with Tele-processing simply phones WDPC and transmits characters from punched cards or magnetic tape, which is then processed by the computer. The results, recorded on a magnetic tape, are then telephoned back to the participating school.

The university workload takes about one half of the time available on the IBM 7094. The remaining period is IBM time. It is used by various IBM departments, by testing customers, and for the training of IBM systems engineers. Under an agreement with UCLA, IBM is not permitted to sell any of the IBM time to productive users.

There are 19 full time IBM employees presently located at WDPC. Six - or 32% - have Ph. D. degrees. They are engaged in such widely different projects as assistance to testing customers, biological simulation, direct couple programming system, remote terminal systems, and IBM systems engineer training.

Why don't you, like the man above, walk through the glass doors, turn on the recording, and learn first-hand about WDPC?

Editor's note! We wish to thank Mike Barrett of WDPC for this interesting article and his assistance in obtaining the pictures to illustrate it.



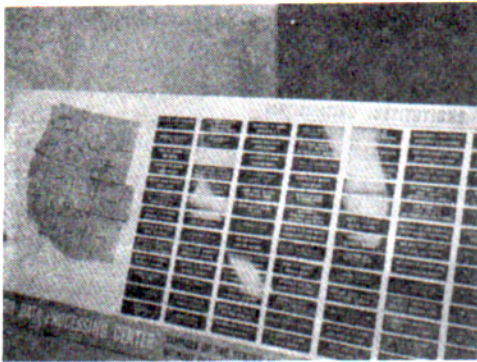
View through the "glass windows"



7040 "master"



Console of the "slave" 7094



Board showing participating institutions. The original number was twenty and quickly doubled, until now it has reached over ninety.



Members of the Los Angeles Systems Research and Development Center's technical staff. Left to right: I. V. Boldt, Dr. Joseph F. Mount, Dr. Bernard Dimsdale, Director Dr. H. H. Givin, and Dr. L. D. Heggie



## ENGAGEMENTS

Vernice Pfeiffer, Product Marketing, has announced her engagement to Jack Hayde of Laguna Beach. They are planning a summer wedding.

Joan Hardman, Special Equipment, recently became engaged to Lonnie Stovall of Granada Hills. No date has been set for the wedding.

## BIRTHS

A son, Geoffrey Nicholas, was born to Donald R. Coward, Systems Engineering Techniques Development, and his wife on February 14 of this year. Geoffrey weighed 8 pounds, 15 ounces.

Mr. and Mrs. Glenn A. Black announce the birth of a son, Jon Arthur, on February 22, 1964. Glenn is in the Applications Development Department.

## DISTRICT 17 CHANGES

There have been some recent changes in the secretarial staff of District 17. Miss Claire Yuhas is now secretary to D. E. Shade, District 17 administration manager. Her new extension is 1365.

Mrs. Barbara Van Dine has become secretary to A. E. Martin-dale, customer engineering operations manager. Her new extension is 1707.

Mrs. Shirley Schreiner has assumed secretarial duties for H. A. Thronson, recruiting coordinator. Her extension is now 1514.

# BOWLING

By GENE UNG



The Spring bowling league is swiftly coming to an end with only a few more weeks left. The "Woodchoppers" are making a shambles of a tough league and have a healthy lead. One of the stars of this team is "Hustling Hugo" Hall.

The other teams are closely bunched together and there is a real battle for the place and show money. A recent contender in the race for the big prize, but slowly sinking in the sunset, has been Thom Kimball's "Good Sports". The "Born Winners" are born losers and are still in last place with no competition in sight. The rest of the league are all within a few points apart.

The summer bowling league will begin around May 22, and will still be on Wednesday at 6:15 P. M., at Midtown Bowl, 4546 Venice Blvd. We will have four people on a team; 2 men and 2 women. Now is the time to start thinking of forming a team or joining the league for a very enjoyable summer. Watch for announcements and additional information on the bulletin boards.

If there are any questions, call Gene Ung, Ext. 1761.

# TRANSFER



Sam E. Wallace

Sam E. Wallace, systems engineer with Systems Engineering Techniques Development, has been with IBM eight years. He joined IBM in the L.A. branch office, making his way, via the South Gate and Westchester offices, to his present position.

Sam lives in Palos Verdes with his wife, Betty, and three children, Barlett, 5; John, 3; and Wendy, 5 months. He enjoys all sports, reading, hi-fi, cars, television and radio.

# IBM CLUB

The WESTERNER is published by the IBM Club Westerner Committee, 3424 Wilshire Blvd., Los Angeles, California 90005.

## STAFF

Jean Ezzo  
Dick Oakes

Co-Chairman  
Co-Chairman

Donna Barnard  
Stephanie Brennan  
Dottie Dean  
Thom Kimball  
Linda Searcy

Department News  
Special Features  
Special Events  
Offset Pressman  
Typist

Listed below are the current IBM Club representatives and their departments. For information regarding any club activities or to report news items please contact your representative.

George Bennett  
Bobbie Clemons  
Carol Cumming  
Sandra Davidson  
Ken Dick  
Jesse Ford  
John Galati  
Penny Greenleaf  
Lela Gwinn  
Pat Hoctor  
Constance Hallam  
Joandell Lay  
Nita Lichter  
Cathie Mahoney  
Lorraine Mills  
John Munro  
Luana Nash  
Shirley Nicholson  
Roberta Nelson  
Lynn Spangler  
Joan Trausch  
Gloria Tsopalian  
Barbara Van Dine

General Accounting  
Programming Systems  
District 20  
Application Development  
Sales Order Control  
DP Services  
Product Scheduling  
Machine Records  
Systems Research & Development  
Special Equipment  
Accounts Receivable  
Measurement Records  
FSD  
AOO  
Payroll  
Datacenter  
Keypunch  
Industry Marketing  
Market Planning  
Application Development  
DP Operations  
Design  
District 17

## CLASSIFIED

FOR SALE

1961 VW SEDAN - Black - Good condition - Original Owner

Richard Kalady, Ext. 1475

1962 RAMBLER CLASSIC 6 - Station Wagon - Low Mileage - Excellent Condition - \$1850

Dondra Ashton, Ext. 1500

MOUNTAIN LOT at Club Arrowhead Villa - All-year recreational area - View of Lake Arrowhead - Reasonable

Gus Marquette, Ext. 1639